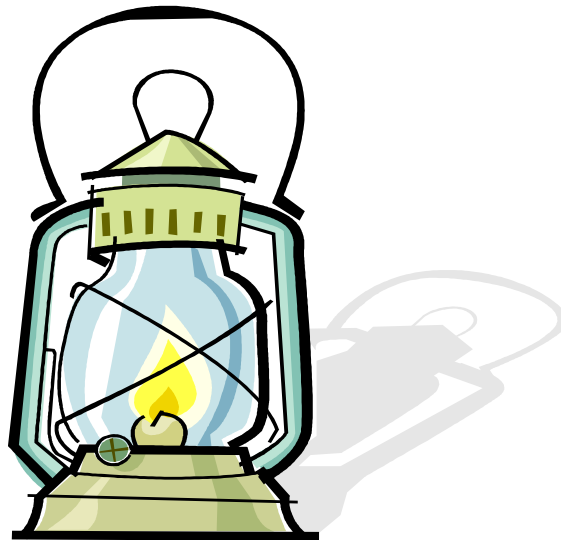




COMMUNITY COHESION POLICY



Autumn 2014



"Shine like a lantern in the presence of the Lord."

We have always encouraged the pupils at St Bede's to think of themselves as part of the local community. We have always believed that our school lies at the heart of the community and that it is our duty to promote the welfare and development of our local community for the benefit of our pupils, their families and all who live within our local area.

The Diversity and Citizenship Curriculum Review, February 2007 says,..... 'we passionately believe that it is the duty of all schools to address issues of 'how we live together' and 'dealing with difference' however controversial and difficult they might get sometimes seem.' There is a duty for schools to promote community cohesion under the Education and Inspections Act 2006.

Community cohesion lies at the heart of what makes a strong and safe community. It must be delivered locally through creating strong networks, based on principles of trust, and respect for local diversity, and by nurturing a sense of belonging and confidence in local people. Effectively delivering community cohesion also tackles the fractures in society which may lead to conflict and ensures that the gains that communities bring are a source of strength to local areas.

Our vision statement says:

'We are committed to making our school a better place to work and learn.'

Our school aims emphasise the importance we place on developing children's skills and attainments.

A cohesive community is one where:

- There is a common vision and a sense of belonging for all communities.
- The diversity of people's different backgrounds and circumstances are appreciated and positively valued.
- Those from different backgrounds have similar life opportunities.
- Strong and positive relationships are being developed between people from different backgrounds in the workplace, in schools and within neighbourhoods.

It is understandable, therefore, why we promote community cohesion at many different levels:

- Within school
- Within the local community
- Across the UK
- Worldwide

St Bede's Catholic Primary School & Nursery welcomes, respects and values the wealth of experience its diverse community brings to all staff, pupils, parents and governors.

The School is situated in Chadwell Heath in the London Borough of Redbridge.

The school draws pupils from a catchment area, which has always been predominately white but is increasingly including a mixture of ethnic minority families. These pupils sometimes include refugees. Some pupils travel from the London Boroughs of Havering and Barking and Dagenham. The school has an admission policy and 91.4% of pupils come from Roman Catholic families.

School commitment.

Community cohesion is part of the school culture and ethos and is demonstrated through:

- Our core values
- Our commitment to the 'Help Children Achieve' agenda through our management structure.
- A curriculum which addresses diversity, equal opportunity, positive relationships and global citizenship.
- We will involve stakeholders in action planning for effective community cohesion.

- We will assess the impact of our community cohesion programme to ensure that we are making a positive contribution to our community.
- The school vision.

We recognise our duty under the Education and Inspectors Act 2006 to promote community cohesion.

The School Community – pupils, parents/carers, staff, Governing Body and other users:

Teaching Learning and Curriculum

- We offer a broad balanced curriculum which places an emphasis on life skills.
- We teach the principles of all religions to enhance the pupils learning.
- We offer the SEAL programme throughout the school along with PHSE and Citizenship to promote common values and help pupils to value differences and challenge prejudice and stereotyping.
- We celebrate ethnic diversity through a varied programme of events.
- We offer high quality Special Needs and Gifted and Talented provision through our curriculum.
- We track pupil's progress carefully and can flag up anomalies promptly.
- We seek to address a variety of learning styles.
- We offer support to pupils for whom English is an additional language to enable them to achieve at the highest possible level in English.
- We have an international perspective to our curriculum with links to Schools in Spain, Ghana, Nigeria and France.

Equity and Excellence

- We motivate all learners through the provision of a dynamic, exciting curriculum
- We enable all children to access the curriculum through our Special Needs and Gifted and Talented provision.
- We have a clear plan for the development of Teaching and Learning and all staff are committed to continuous improvement.
- We have an Disability Equality Scheme and Race Equality policy in place
- Our Core Values promote excellence in all areas of school life.

Engagement and Extended Services

- We offer a wide range of extra curricula activity.
- We are building links with other schools in Redbridge
- We instil a sense of community through our School Council.
- We operate a whole school Behaviour Management policy which is successful and which also instils a sense of community.
- A senior leader's role is dedicated to Extended Services.
- We have an active PTA who play their part in the community.

The Local Community:

Teaching, Learning and Curriculum

- We raise awareness of the local community through curricular activity.
- We invite members of the local community into school e.g. Priest, police, fire service.
- We promote active citizenship as part of the ethos of the school.

Equity and Excellence

- Through our pupil voice initiative we have made a contribution to local initiatives

Engagement and Extended Services

- We take part in many inter school initiatives e.g. sports tournaments and host some of them
- We have a strong link with our local church
- We host information sessions for our parents e.g. Internet Safety
- We have in place a comprehensive Induction programme to help children settle in.

The UK Community:

Teaching and Learning and the Curriculum

- We ensure that our pupils are aware of national and local events that affect other people's lives.
- Our curriculum takes into account how different communities within the UK may live e.g. rural, suburban by our links with other UK schools.

Equity and Excellence

- We invite people from within the UK to work with our children.

Engaged and extended Services

- We take part in events in other parts of the country e.g. 'O2', Royal Albert Hall

The Global Community:

Teaching, Learning and Curriculum

- We teach French throughout the school
- ICT is enabling a global perspective to be more available to all

Equity and Excellence

- We have in place a programme of events which often celebrate different cultures and promotes tolerance e.g. International Week,
- Through curriculum activities all children have access to a global perspective.

Engagement and extended services

- We are building links with other International Schools.

Implementation:

This policy is supported by an annual action plan which outlines the action the school will be taking to meet the general duty and make practical improvements for community cohesion.

Monitoring, Evaluation and Reporting.

There will be an annual internal evaluation of this policy.

- Progress made.
- Outcomes achieved.
- Work in progress.