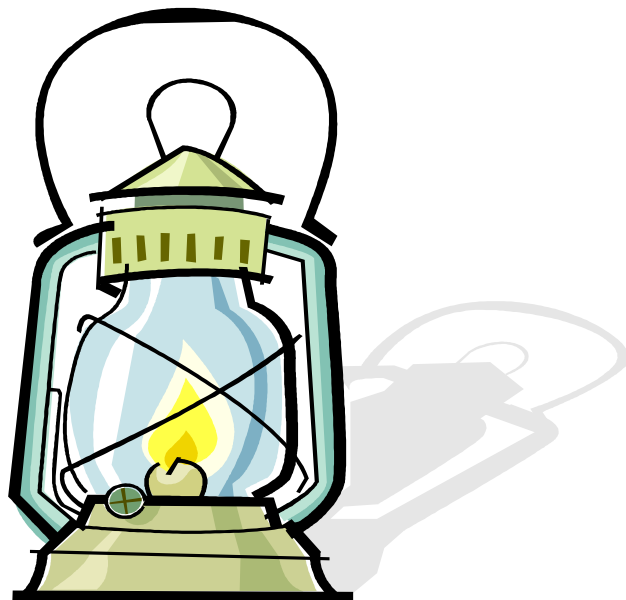





SUSPENSIONS and EXCLUSIONS POLICY



“Shine like a Lantern in the presence of the Lord”

Approved by:	Head Teacher	Date: 04 – 09 – 2023
Signed		
Last reviewed on:	Autumn 2023	
Next review due by:	Autumn 2024	

CONTENTS

1. Aims.....	3
2. Legislation and statutory guidance.....	3
3. The decision to exclude	3
4. Definition.....	4
5. Roles and responsibilities.....	4
6. Considering the reinstatement of a pupil	5
7. An independent review	6
8. School registers	7
9. Returning from a fixed-term exclusion	7
10. Monitoring arrangements.....	8
11. Links with other policies	8
Appendix 1: independent review panel training	9

1. AIMS

Our school aims to ensure that:

- The suspension and exclusions process is applied fairly and consistently
- The suspension and exclusions process is understood by governors, staff, parents and pupils
- Pupils in school are safe and happy
- Pupils do not become NEET (not in education, employment or training)

2. LEGISLATION AND STATUTORY GUIDANCE

This policy is based on statutory guidance from the Department for Education: [Suspension and permanent exclusion from maintained schools, academies and pupil referral units in England, including pupil movement](#).

It is based on the following legislation, which outlines schools' powers to exclude pupils:

- Section 51a of the Education Act 2002, as amended by the Education Act 2011
- The School Discipline (Pupil Exclusions and Reviews) (England) Regulations 2012

In addition, the policy is based on:

- Part 7, chapter 2 of the [Education and Inspections Act 2006](#), which sets out parental responsibility for excluded pupils
- Section 579 of the [Education Act 1996](#), which defines 'school day'
- The [Education \(Provision of Full-Time Education for Excluded Pupils\) \(England\) Regulations 2007](#), as amended by [The Education \(Provision of Full-Time Education for Excluded Pupils\) \(England\) \(Amendment\) Regulations 2014](#)
- [The Equality Act 2010](#)

[Children and Families Act 2014](#)

3. THE DECISION TO SUSPEND OR EXCLUDE

Only the headteacher, or a person acting with the headteacher's authority, can suspend or exclude a pupil from our school. Exclusions will be taken as a last resort.

A decision to suspend or exclude a pupil will be taken only:

- in response to serious or persistent breaches of the school's behaviour policy; or
- if allowing the pupil to remain in school would seriously harm the education or welfare of others.

Specifically pupils may be suspended or excluded for:

- physical violence
- threats of physical violence
- possession of an offensive weapon
- possession of inappropriate material
- inappropriate online behaviour
- bullying, intimidation or harassment
- inappropriate physical contact with pupils or staff
- damage to property or theft
- vandalism
- spitting
- arson

- offensive language/ gestures towards staff
- shouting or screaming at staff members
- persistent disruptive behaviour including open defiance
- bringing the school's reputation into disrepute

The list is not exhaustive.

Before deciding whether to suspend or exclude a pupil, the headteacher will consider:

- intent;
- all the relevant facts and evidence, including whether the incident(s) leading to the exclusion were provoked; and
- if the pupil has additional needs (special educational needs or other) or a disability (SEND).

4. DEFINITION

For the purposes of suspensions and exclusions, the school day is defined as any day on which there is a school session: INSET, or staff training, days do not count as a school day.

5. ROLES AND RESPONSIBILITIES

5.1 The Headteacher

INFORMING PARENTS

The headteacher will immediately provide the following information, in writing, to the parents of a suspended or excluded pupil:

- the reason(s) for the suspension or exclusion
- the length of a suspension
- information about parents' right to make representations about the suspension or exclusion to the governing body and how the pupil may be involved in this
- where there is a legal requirement for the governing body to meet to consider the reinstatement of a pupil, and that parents have a right to attend a meeting, be represented at a meeting (at their own expense) and to bring a friend

The headteacher will also notify parents by the end of the afternoon session on the day their child is suspended that for the first 5 school days of a suspension or until the start date of any alternative provision where this is earlier, parents are legally required to ensure that their child is not present in a public place during school hours without a good reason. Parents may be given a fixed penalty notice or prosecuted if they fail to do this.

If alternative provision is being arranged, the following information will be included when notifying parents of an exclusion:

- the start date for any provision of full-time education that has been arranged;
- the start and finish times of any such provision, including the times for morning and afternoon sessions, where relevant;
- the address at which the provision will take place;
- any information required by the pupil to identify the person they should report to on the first day

Where this information on alternative provision is not reasonably ascertainable by the end of the afternoon session, it may be provided in a subsequent notice, but it will be provided no later than 48 hours before the provision is due to start. The only exception to this is

where alternative provision is to be provided before the sixth day of a suspension, in which case the information can be provided with less than 48 hours' notice with parents' consent.

INFORMING THE GOVERNING BODY AND LOCAL AUTHORITY

The headteacher will immediately notify the Governing Body and the local authority (LA) of:

- an exclusion;
- suspensions that would result in the pupil being suspended for more than 5 school days (or more than 10 lunchtimes) in a term;
- suspensions that would result in the pupil missing a public examination.

For an exclusion, if the pupil lives outside the LA in which the school is located, the headteacher will also immediately inform the pupil's 'home authority' of the exclusion and the reason(s) for it without delay.

For all other suspensions, the headteacher will notify the Governing Body and LA once a term.

5.2 THE GOVERNING BODY

Responsibilities regarding exclusions is delegated to the Pupil Discipline Committee consisting of at least 3 governors.

The Pupil Discipline Committee has a duty to consider the reinstatement of an excluded pupil (see section 6).

The Governing Body has a duty to consider the reinstatement of an excluded pupil (see section 6).

Within 14 days of receipt of a request, the Governing Body will provide the Secretary of State and the LA with information about any exclusions in the last 12 months.

For a suspension of more than 5 school days, the governing body will arrange suitable full-time education for the pupil. This provision will begin no later than the sixth day of the exclusion.

5.3 THE LOCAL AUTHORITY

For exclusions, the LA is responsible for arranging suitable full-time education to begin no later than the sixth day of the exclusion.

6. CONSIDERING THE REINSTATEMENT OF A PUPIL

The Pupil Discipline Committee will consider the reinstatement of a suspended or excluded pupil within 15 school days of receiving the notice of:

- the exclusion;
- a suspension that would bring the pupil's total number of school days of suspension to more than 15 in a term
- the suspension or exclusion would result in a pupil missing a public examination

If requested to do so by parents, the Pupil Discipline Committee will consider the reinstatement of a suspended pupil within 50 school days of receiving notice of the suspension if the pupil would be suspended from school for more than 5 school days, but less than 15, in a single term.

Where a suspension would result in a pupil missing a public examination, the Pupil Discipline Committee will consider the reinstatement of the pupil before the date of the

examination. If this is not practicable, the Chair of the Governing Body (or the Vice-Chair where the Chair is unable to make this consideration) will consider the suspension independently and decide whether or not to reinstate the pupil.

The Pupil Discipline Committee can either:

- decline to reinstate the pupil; or
- direct the reinstatement of the pupil immediately, or on a particular date.

In reaching a decision, the Pupil Discipline Committee will consider whether the suspension was lawful, reasonable and procedurally fair and whether the headteacher followed their legal duties. They will decide whether or not a fact is true ‘on the balance of probabilities’, which differs from the criminal standard of ‘beyond reasonable doubt’, as well as any evidence that was presented in relation to the decision to exclude.

Minutes will be taken of the meeting, and a record of evidence considered kept. The outcome will also be recorded on the pupil’s educational record.

The Pupil Discipline Committee will notify, in writing, the headteacher, parents and the LA of its decision, along with reasons for its decision, without delay.

In terms of an exclusion, the Pupil Discipline Committee’s decision will also include the following:

- the fact that it is an exclusion not a suspension;
- notice of parents’ right to ask for the decision to be reviewed by an independent review panel, and:
 - the date by which an application for an independent review must be made;
 - the name and address to whom an application for a review should be submitted;
 - that any application should set out the grounds on which it is being made and that, where appropriate, reference to how the pupil’s SEN are considered to be relevant to the exclusion;
 - that, regardless of whether the excluded pupil has recognised SEN, parents have a right to require the LA to appoint an SEN expert to attend the review;
 - details of the role of the SEN expert and that there would be no cost to parents for this appointment;
 - that parents must make clear if they wish for an SEN expert to be appointed in any application for a review, and
 - that parents may, at their own expense, appoint someone to make written and/or oral representations to the panel, and parents may also bring a friend to the review.
- that if parents believe that the exclusion has occurred as a result of discrimination, they may make a claim under the Equality Act 2010 to the first-tier tribunal (special educational needs and disability), in the case of disability discrimination, or the County Court, in the case of other forms of discrimination. A claim of discrimination made under these routes should be lodged within 6 months of the date on which the discrimination is alleged to have taken place.

7. AN INDEPENDENT REVIEW

If parents apply for an independent review, the LA will arrange for an independent panel to review the decision of the Governing Body not to reinstate a permanently excluded pupil.

Applications for an independent review must be made within 15 school days of notice being given to the parents by the Pupil Discipline Committee of its decision to not reinstate a pupil.

A panel of 3 or 5 members will be constituted with representatives from each of the categories below. Where a 5-member panel is constituted, 2 members will come from the school governors' category and 2 members will come from the headteacher category:

- a lay member to chair the panel who has not worked in any school in a paid capacity, disregarding any experience as a school governor or volunteer;
- school governors who have served as a governor for at least 12 consecutive months in the last 5 years, provided they have not been teachers or headteachers during this time;
- Headteachers or individuals who have been a headteacher within the last 5 years.

A person may not serve as a member of a review panel if they:

- are a member of the LA, or governing body of the excluding school;
- are the headteacher of the excluding school, or have held this position in the last 5 years;
- are an employee of the LA, or the Governing Body of the excluding school (unless they are employed as a headteacher at another school);
- have, or at any time have had, any connection with the LA, school, Governing Body, parents or pupil, or the incident leading to the exclusion, which might reasonably be taken to raise doubts about their impartiality;
- have not had the required training within the last 2 years (see appendix 1 for what training must cover).

A clerk will be appointed to the panel.

The independent panel will decide one of the following:

- uphold the Governing Body's decision
- recommend that the Governing Body reconsiders reinstatement
- quash the Governing Body's decision and direct that they reconsider reinstatement (only when the decision is judged to be flawed).

The panel's decision can be decided by a majority vote. In the case of a tied decision, the chair has the casting vote.

8. SCHOOL REGISTERS

A pupil's name will be removed from the school admissions register if:

- 15 school days have passed since the parents were notified of the exclusion panel's decision to not reinstate the pupil and no application has been made for an independent review panel, or
- the parents have stated in writing that they will not be applying for an independent review panel.

Where an application for an independent review has been made, the Governing Body will wait until that review has concluded before removing a pupil's name from the register.

Where alternative provision has been made for an excluded pupil and they attend it, code B (education off-site) or code D (dual registration) will be used on the attendance register.

Where excluded pupils are not attending alternative provision, code E (absent) will be used.

9. RETURNING FROM A FIXED-TERM EXCLUSION

Following a suspension, a re-integration meeting may be held involving the pupil, parents, a member of senior staff and other staff, where appropriate.

10. MONITORING ARRANGEMENTS

The headteacher monitors the number of suspensions every term and reports back to the governors. We liaise with the local authority to ensure suitable full-time education for excluded pupils.

This policy will be reviewed by the headteacher every year. At every review, the policy will be shared with the governing body.

11. LINKS WITH OTHER POLICIES

This exclusions policy is linked to our

- Behaviour and Discipline Policy
- SEND Policy and Information Report

APPENDIX 1: INDEPENDENT REVIEW PANEL TRAINING

The LA must ensure that all members of an independent review panel and clerks have received training within the 2 years prior to the date of the review.

Training must have covered:

- the requirements of the primary legislation, regulations and statutory guidance governing exclusions, which would include an understanding of how the principles applicable in an application for judicial review relate to the panel's decision making
- the need for the Panel to observe procedural fairness and the rules of natural justice
- the role of the Chair and the Clerk of a Review Panel
- the duties of Headteachers, Governing Bodies and the Panel under the Equality Act 2010
- the effect of section 6 of the Human Rights Act 1998 (acts of public authorities unlawful if not compatible with certain human rights) and the need to act in a manner compatible with human rights protected by that Act